

VDS 212 SV

12" MARINE MONITOR



video display systems

Specifically designed for outside applications, the VDS 212 SV display provides a standard XGA 12" LCD/TFT panel suitable for being deployed in harsh environments. Its bonded glass ensures both perfect readability and comfort in every light condition while effectively preventing dew condensation effects that downgrade visibility.



HIGHLIGHTS

- ▼ OUTSIDE APPLICATIONS (FLY BRIDGE)
- ▼ SUNVIEWABLE IN EVERY LIGHT CONDITION
- ▼ FULLY IP65 WATERPROOF
- ▼ DIMMING MAX ÷ 0
- ▼ EASY INSTALLATION

Technical Specifications

DISPLAY

Active area:	246(h) × 184(v) mm
Backlight lamps:	2 CCFL
Bonded safety glass:	Bonded, contrast enhancing, optically coated
Colors:	256 K
Contrast:	700:1 (typ)
Dimming:	Max ÷ 0
Dot pitch:	0,240 mm
Luminance:	450 cd/m ² (typ)
Minimum lamps life:	50000 hours
Resolution:	1024 x 768 pixels (XGA)
Response time:	25 ms
Size:	12.1"
Type:	LCD TFT color
Viewing angles:	± 80° / ± 80° (h/v)

ENVIRONMENT

Enclosure IP rating:	IP 65
Front frame IP rating:	IP 65
Operating temperature:	-5 ÷ 55 °C
Relative humidity (non condensing):	up to 95%
Storage temperature:	-20 ÷ 60 °C

INPUT SIGNALS

1x VGA input port 15 pin, High Density, D-SUB, female, IP67

PHYSICAL DATA

Mounting type:	Console/Flush
Overall dimensions:	314(h) × 278(v) × 108(d) mm
Weight:	4,6 Kg

POWER SUPPLY

Max consumption:	1.5A @ 24 Vdc
Power supply connector:	3 pin CONXALL IP67
Voltage range:	15 ÷ 35 Vdc



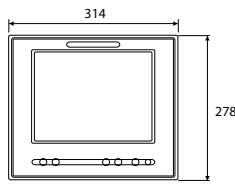
VDS 212 SV

12" MARINE MONITOR

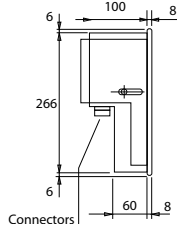


video display systems

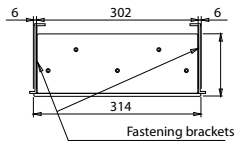
Wall Mounting



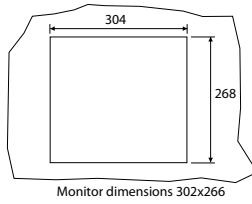
FRONT VIEW



SIDE VIEW



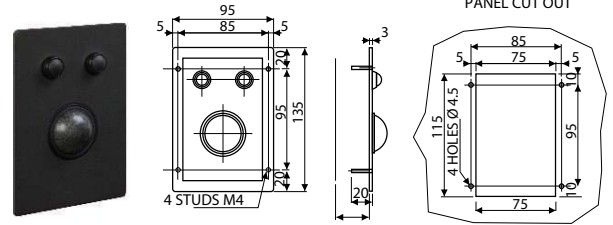
TOP VIEW



PANEL CUT OUT

Options and Accessories

Trackball



Specifications (basic version)

Sphere diameter:	38mm
Interfacing:	USB port
Connector:	USB type
Operating temperature:	-5°C+55°C
Storage temperature:	-20°C+60°C
Expected life:	>1 million sphere revolutions
Waterproofing degree:	IP60

OPTIONS

Waterproofing degree:	IP67
-----------------------	------

VDS trackballs provide a convenient and robust pointing device for inside applications (IP60 compliant version) as well as outside applications (IP67 compliant version).

Ordering Codes

VDS 212 SV basic version

M212SV VDS 212 SV display 12.1", Glass bonded, 24Vdc, 1xVGA, Console brackets

ACCESSORIES

M0072 38mm IP67 trackball (light grey color)

OPTIONS

M0031 2nd VGA input (IP67 connector)

One among the following:

M0045 1 PAL/NTSC input (IP67 connector)

M0046 2 PAL/NTSC inputs (IP67 connectors)

M0047 3 PAL/NTSC inputs (IP67 connectors)

M0048 4 PAL/NTSC inputs (IP67 connectors)

One among the following:

M0050 10-35 Vdc power supply

M0051 10-35 Vdc isolated power supply

