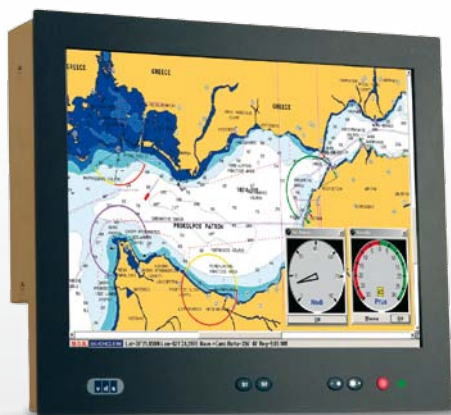


VDS 215 C

15" MARINE MONITOR



video display systems



Specifically designed for inside applications, the VDS 215 C display provides a standard XGA 15" LCD/TFT panel in a robust and essential enclosure. Robustness, simplicity in installation and operation make it ideal for environments where reliability, space optimization and effectiveness demands are very high.

HIGHLIGHTS

- ▼ INSIDE APPLICATIONS
- ▼ EASY INSTALLATION
- ▼ WIDE OPERATING VOLTAGE RANGE
- ▼ TOUCHSCREEN VERSION AVAILABLE
- ▼ COMFORTABLE IN EVERY LIGHT CONDITION
- ▼ MULTIPLE VIDEO INPUTS
- ▼ MULTI-PANEL DIMMING

Technical Specifications

DISPLAY

Active area:	304(h) × 228(v) mm
Backlight lamps:	2 CCFL
Bonded safety glass:	Bonded, contrast enhancing, optically coated (optional)
Colors:	16.2 M
Contrast:	700:1 (typ)
Dimming:	Max ÷ 0
Dot pitch:	0,297 mm
Luminance:	350 cd/m ² (typ)
Minimum lamps life:	50000 hours
Resolution:	1024 x 768 pixels (XGA)
Response time:	8 ms
Safety glass:	Clear glass
Size:	15"
Type:	LCD TFT color
Viewing angles:	± 70° / +65° ÷ -60° (h/v)

ENVIRONMENT

Enclosure IP rating:	IP 20
Front frame IP rating:	IP 65
Operating temperature:	-5 ÷ 55 °C
Relative humidity (non condensing):	20 ÷ 80 %
Storage temperature:	-20 ÷ 60 °C

INPUT SIGNALS

1x VGA 15 pin, High Density, D-SUB, female

PHYSICAL DATA

Mounting type:	Console/Flush
Overall dimensions:	360(h) × 312(h) × 75(d) mm
Weight:	4,3 Kg

POWER SUPPLY

Max consumption:	1.5A @ 24 Vdc
Power supply connector:	PHOENIX COMBICON MSTB 2,5/3-G-5,8
Voltage range:	15 ÷ 35 Vdc

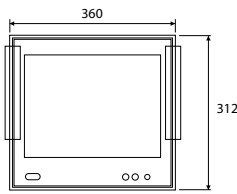
VDS 215 C

15" MARINE MONITOR

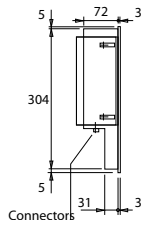


video display systems

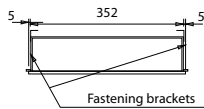
Wall Mounting



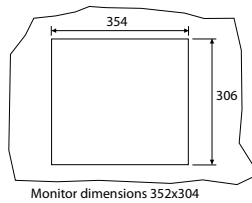
FRONT VIEW



SIDE VIEW



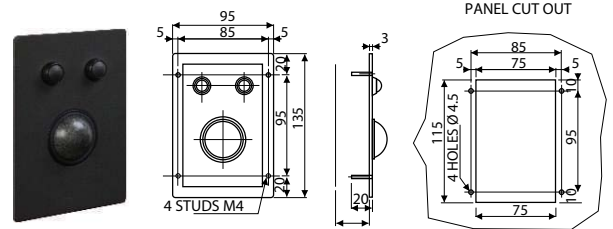
TOP VIEW



PANEL CUT OUT

Options and Accessories

Trackball



Specifications (basic version)

Sphere diameter:	38mm
Interfacing:	USB port
Connector:	USB type
Operating temperature:	-5°C+55°C
Storage temperature:	-20°C+60°C
Expected life:	>1 million sphere revolutions
Waterproofing degree:	IP60

OPTIONS

Waterproofing degree:	IP67
-----------------------	------

VDS trackballs provide a convenient and robust pointing device for inside applications (IP60 compliant version) as well as outside applications (IP67 compliant version).

Ordering Codes

VDS 215 C basic version

M215C VDS 215 C display 15", 24Vdc, 1xVGA, Console brackets

ACCESSORIES

One among the following:

- M0071** 38mm trackball (black color)
- M0072** 38mm IP67 trackball (light grey color)

OPTIONS

Any of the following:

- M0030** 2nd VGA input
- M0082** 15" Bonded optical coated safety glas

One among the following:

- M0061** RS-232/RS-422/RS-485 port for PC interface
- M15TS** 15" resistive touch screen

One among the following:

- M0041** 1 PAL/NTSC input
- M0042** 2 PAL/NTSC inputs
- M0043** 3 PAL/NTSC inputs
- M0044** 4 PAL/NTSC inputs

One among the following:

- M0050** 10-35 Vdc power supply
- M0051** 10-35 Vdc isolated power supply

