

VDS 217 C

17" MARINE MONITOR



video display systems

Specifically designed for inside applications, the VDS 217 C display provides a standard SXGA 17" LCD/TFT panel in a robust and essential enclosure. Robustness, simplicity in installation and operation make it ideal for environments where reliability, space optimization and effectiveness demands are very high.



HIGHLIGHTS

- ▶ INSIDE APPLICATIONS
- ▶ EASY INSTALLATION
- ▶ WIDE OPERATING VOLTAGE RANGE
- ▶ TOUCHSCREEN VERSION AVAILABLE
- ▶ COMFORTABLE IN EVERY LIGHT CONDITION
- ▶ MULTIPLE VIDEO INPUTS
- ▶ MULTI-PANEL DIMMING

Technical Specifications

DISPLAY

Active area:	338(h) × 270(v) mm
Backlight lamps:	4 CCFL
Bonded safety glass:	Bonded, contrast enhancing, optically coated (optional)
Colors:	16.7 M
Contrast:	800:1 (typ)
Dimming:	Max ÷ 0
Dot pitch:	0,264 mm
Luminance:	300 cd/m ² (typ)
Minimum lamps life:	50000 hours
Response time:	5 ms
Safety glass:	Clear glass
Size:	17"
Type:	LCD TFT color
Viewing angles:	± 80° / ± 80° (h/v)

ENVIRONMENT

Enclosure IP rating:	IP 20
Front frame IP rating:	IP 65
Operating temperature:	-5 ÷ 55 °C
Storage temperature:	-20 ÷ 60 °C

INPUT SIGNALS

1x VGA 15 pin, High Density, D-SUB, female

PHYSICAL DATA

Mounting type:	Console/Flush
Overall dimensions:	392(h) × 354(h) × 78(d) mm
Weight:	6,2 Kg

POWER SUPPLY

Max consumption:	2A @ 24 Vdc
Power supply connector:	PHOENIX COMBICON MSTB 2,5/3-G-5,8
Voltage range:	15 ÷ 35 Vdc

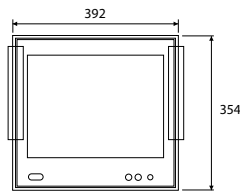
VDS 217 C

17" MARINE MONITOR

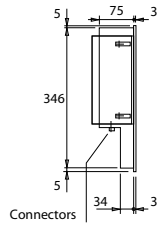


video display systems

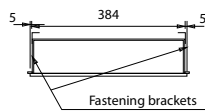
Wall Mounting



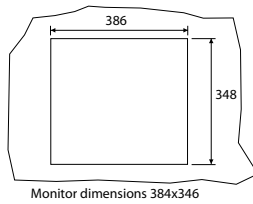
FRONT VIEW



SIDE VIEW



TOP VIEW

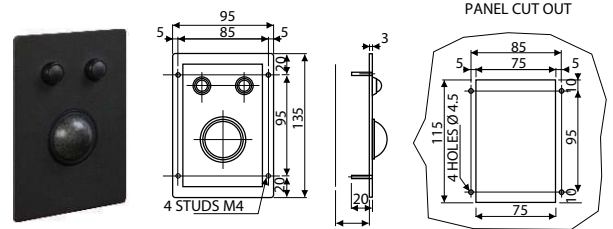


Monitor dimensions 384x348

PANEL CUT OUT

Options and Accessories

Trackball



Specifications (basic version)

Sphere diameter:	38mm
Interfacing:	USB port
Connector:	USB type
Operating temperature:	-5°C+55°C
Storage temperature:	-20°C+60°C
Expected life:	>1 million sphere revolutions
Waterproofing degree:	IP60

OPTIONS

Waterproofing degree:	IP67
-----------------------	------

VDS trackballs provide a convenient and robust pointing device for inside applications (IP60 compliant version) as well as outside applications (IP67 compliant version).

Ordering Codes

VDS 217 C basic version

M217C VDS 217 C display 17", 24Vdc, 1xVGA, Console brackets

OPTIONS

Any of the following:

- M0030** 2nd VGA input
- M0083** 17" Bonded optical coated safety glass

One among the following:

- M0061** RS-232/RS-422/RS-485 port for PC interface

M17TS 17" resistive touch screen

One among the following:

- M0041** 1 PAL/NTSC input
- M0042** 2 PAL/NTSC inputs
- M0043** 3 PAL/NTSC inputs
- M0044** 4 PAL/NTSC inputs

One among the following:

- M0050** 10-35 Vdc power supply
- M0051** 10-35 Vdc isolated power supply

