

VDS 220 C

20" MARINE MONITOR



video display systems

Specifically designed for inside applications, the VDS 220 C display provides a standard UXGA 20" LCD/TFT panel in a robust and essential enclosure. Robustness, simplicity in installation and operation make it ideal for environments where reliability, space optimization and effectiveness demands are very high.



HIGHLIGHTS

- ▶ INSIDE APPLICATIONS
- ▶ EASY INSTALLATION
- ▶ WIDE OPERATING VOLTAGE RANGE
- ▶ TOUCHSCREEN VERSION AVAILABLE
- ▶ COMFORTABLE IN EVERY LIGHT CONDITION
- ▶ MULTIPLE VIDEO INPUTS
- ▶ MULTI-PANEL DIMMING

Technical Specifications

DISPLAY

Active area:	408(h) × 306(v) mm
Backlight lamps:	6 CCFL
Bonded safety glass:	Bonded, contrast enhancing, optically coated (optional)
Colors:	16.7 M
Contrast:	500:1 (typ)
Dimming:	Max ÷ 0
Dot pitch:	0,255 mm
Minimum lamps life:	50000 hours
Response time:	20 ms
Safety glass:	Clear glass
Size:	20"
Type:	LCD TFT color
Viewing angles:	± 88° / ± 88° (h/v)

ENVIRONMENT

Enclosure IP rating:	IP 20
Front frame IP rating:	IP 65
Operating temperature:	-5 ÷ 55 °C
Storage temperature:	-20 ÷ 60 °C

INPUT SIGNALS

1xVGA 15 pin, High Density, D-SUB, female

PHYSICAL DATA

Mounting type:	Console/Flush
Overall dimensions:	475(h) × 424(v) × 100(d) mm
Weight:	11 Kg

POWER SUPPLY

Max consumption:	3.5A @ 24 Vdc
Power supply connector:	PHOENIX COMBICON MSTB 2,5/3-G-5,8
Voltage range:	15 ÷ 35 Vdc

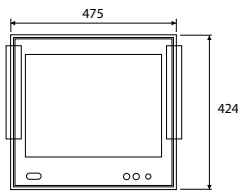
VDS 220 C

20" MARINE MONITOR

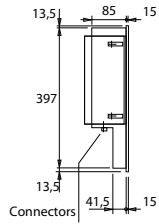


video display systems

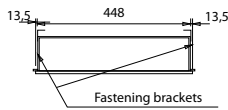
Wall Mounting



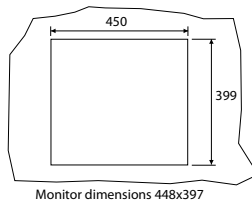
FRONT VIEW



SIDE VIEW



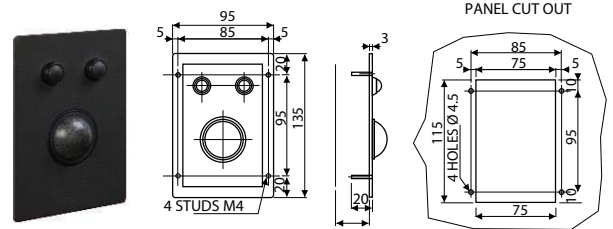
TOP VIEW



PANEL CUT OUT

Options and Accessories

Trackball



Specifications (basic version)

Sphere diameter:	38mm
Interfacing:	USB port
Connector:	USB type
Operating temperature:	-5°C+55°C
Storage temperature:	-20°C+60°C
Expected life:	>1 million sphere revolutions
Waterproofing degree:	IP60

OPTIONS

Waterproofing degree:	IP67
-----------------------	------

VDS trackballs provide a convenient and robust pointing device for inside applications (IP60 compliant version) as well as outside applications (IP67 compliant version).

Ordering Codes

VDS 220 C basic version

M220C VDS 220 C display 20.1", 24Vdc, 1xVGA, Console brackets

ACCESSORIES

One among the following:

- M0071** 38mm trackball (black color)
- M0072** 38mm IP67 trackball (light grey color)

OPTIONS

Any of the following:

- M0030** 2nd VGA input
- M0053** 15-35 Vdc isolated power supply
- M0085** 20.1" Bonded optical coated safety glass

One among the following:

- M0061** RS-232/RS-422/RS-485 port for PC interface
- M20TS** 20.1" resistive touch screen

One among the following:

- M0041** 1 PAL/NTSC input
- M0042** 2 PAL/NTSC inputs
- M0043** 3 PAL/NTSC inputs
- M0044** 4 PAL/NTSC inputs