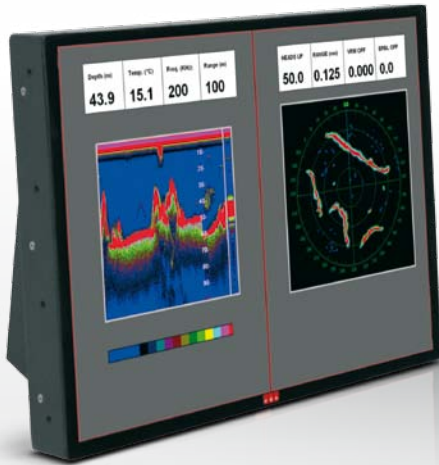


VDS 315 D

15" MARINE MONITOR



video display systems



The VDS 315 D display provides a standard XGA 15" LCD/TFT panel with a non-compromising mechanical design and excellent performance. A proven glass bonding process leads to drastically reduced light reflection and improved contrast, enabling perfect readability even in very low-light environments and keeping mechanical robustness at the top.

Enclosure has been designed to minimize the distance between adjacent panels, making VDS 315 D ideal for glass bridge installations. The display complies with EN 60945 and RINA Rules 2007 regulations.

HIGHLIGHTS

- ▼ GLASS BRIDGE SOLUTION
- ▼ COMFORTABLE IN ANY LIGHT CONDITION
- ▼ WIDE OPERATING VOLTAGE RANGE
- ▼ FLEXIBLE MOUNTING OPTIONS
- ▼ MULTI-PANEL DIMMING
- ▼ MULTIPLE VIDEO INPUTS
- ▼ RINA RULES 2007 COMPLIANT
- ▼ EN 60945 4TH COMPLIANT

Technical Specifications

APPROVALS/COMPLIANCE

Type approved: RINA Rules 2008 PtC, Ch3, Sec6 and EN60945 4th

DISPLAY

Active area:	304(h) × 228(v) mm
Backlight lamps:	2 CCFL
Bonded safety glass:	Bonded, contrast enhancing, optically coated
Colors:	16.2 M
Contrast:	700:1 (typ)
Dimming:	Max ÷ 0
Dot pitch:	0,297 mm
Luminance:	450 cd/m ² (typ)
Minimum lamps life:	50000 hours
Resolution:	1024 × 768 pixels (XGA)
Response time:	25 ms
Size:	15"
Type:	LCD TFT color
Viewing angles:	± 80° / ± 80° (h/v)

ENVIRONMENT

Enclosure IP rating:	IP 20
Operating temperature:	-15 ÷ 55 °C
Relative humidity (non condensing):	20 ÷ 80 %
Storage temperature:	-20 ÷ 60 °C

INPUT SIGNALS

1x DVI-D input port 29 pin, DVI-D, female, single link
 2x VGA inputs ports 15 pin, High Density, D-SUB, female
 4x PAL/NTSC composite video input ports BNC, female

PHYSICAL DATA

Mounting type:	Console/Flush, Desktop
Overall dimensions:	335(h) × 258(v) × 106(d) mm
Weight:	4,4 Kg

POWER SUPPLY

Power supply connector:	PHOENIX COMBICON MSTB 2,5/3-G-5,8
Voltage range:	10 ÷ 35 Vdc (isolated)

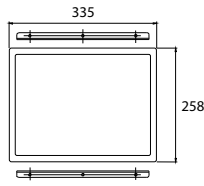
VDS 315 D

15" MARINE MONITOR

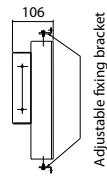


video display systems

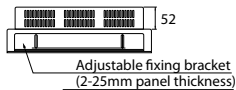
Wall Mounting



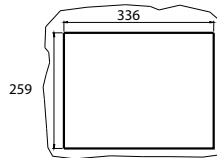
FRONT VIEW



SIDE VIEW

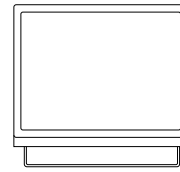


TOP VIEW

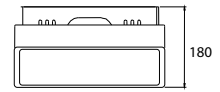


PANEL CUT OUT

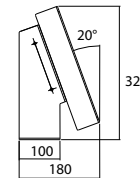
Desk Top Mounting



FRONT VIEW



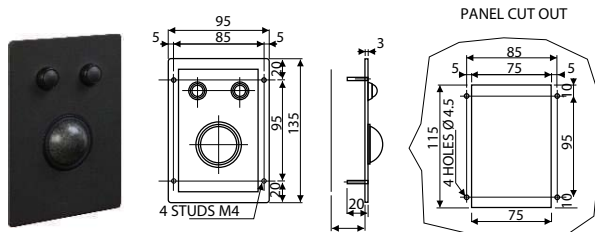
TOP VIEW



SIDE VIEW

Options and Accessories

Trackball



Specifications (basic version)

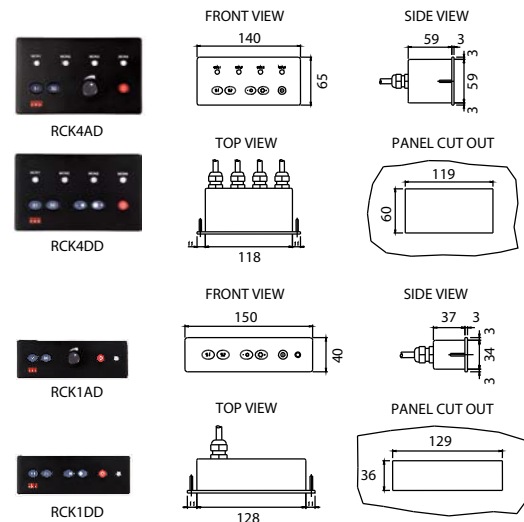
Sphere diameter:	38mm
Interfacing:	USB port
Connector:	USB type
Operating temperature:	-5°C+55°C
Storage temperature:	-20°C+60°C
Expected life:	>1 million sphere revolutions
Waterproofing degree:	IP60

OPTIONS

Waterproofing degree:	IP67
-----------------------	------

VDS trackballs provide a convenient and robust pointing device for inside applications (IP60 compliant version) as well as outside applications (IP67 compliant version).

Remote Keyboard Controllers



The remote keyboard controller provides controls for video source selection and display dimming (analogue or digital) for one or more panels simultaneously. It can be placed on the bridge wherever functionally most convenient.

Ordering Codes

VDS 315 D basic version

M315D VDS 315 D display 15", 24Vdc (isolated), 2xVGA, 1xDVI-D, 4xPAL/NTSC, Console and Desktop brackets

ACCESSORIES

M0080 VESA standard bracket

One among the following:

M0063 RCK4DD: multiple display (1÷4) Remote Control Keyboard (digital dimming)

M0064 RCK1AD: single display Remote Control Keyboard (analogue dimming)

M0065 RCK4AD: multiple display (1÷4) Remote Control Keyboard (analogue dimming)

M0066 RCK1DD: single display Remote Control Keyboard (digital dimming)

One among the following:

M0071 38mm trackball (black color)

M0072 38mm IP67 trackball (light grey color)

OPTIONS

M0061 RS-232/RS-422/RS-485 port for PC interface

One among the following:

M0045 1 PAL/NTSC input (IP67 connector)

M0046 2 PAL/NTSC inputs (IP67 connectors)

M0047 3 PAL/NTSC inputs (IP67 connectors)

M0048 4 PAL/NTSC inputs (IP67 connectors)