

# VDS 317 D

17" MARINE MONITOR



video display systems



The VDS 317 D display provides a standard SXGA 17" LCD/TFT panel with a non-compromising mechanical design and excellent performance. A proven glass bonding process leads to drastically reduced light reflection and improved contrast, enabling perfect readability even in very low-light environments and keeping mechanical robustness at the top.

Enclosure has been designed to minimize the distance between adjacent panels, making VDS 317 D ideal for glass bridge installations. The display complies with EN 60945 and RINA Rules 2007 regulations.

## HIGHLIGHTS

- ▼ GLASS BRIDGE SOLUTION
- ▼ COMFORTABLE IN EVERY LIGHT CONDITION
- ▼ WIDE OPERATING VOLTAGE RANGE
- ▼ FLEXIBLE MOUNTING OPTIONS
- ▼ MULTI-PANEL DIMMING SUPPORTED
- ▼ MULTIPLE VIDEO INPUTS
- ▼ RINA RULES 2007 COMPLIANT
- ▼ EN 60945 4TH COMPLIANT

## Technical Specifications

### APPROVALS/COMPLIANCE

Type approved: RINA Rules 2008 PtC, Ch3, Sec6 and EN60945 4th

### DISPLAY

Active area: 338(h) × 270(v) mm  
 Backlight lamps: 4 CCFL  
 Bonded safety glass: Bonded, contrast enhancing, optically coated  
 Colors: 16.7 M  
 Contrast: 800:1 (typ)  
 Dimming: Max ÷ 0  
 Dot pitch: 0,264 mm  
 Luminance: 300 cd/m<sup>2</sup> (typ)  
 Minimum lamps life: 50000 hours  
 Resolution: 1280 x 1024 pixels (SXGA)  
 Response time: 25 ms  
 Size: 17"  
 Type: LCD TFT color  
 Viewing angles: ± 80° / ± 80° (h/v)

### ENVIRONMENT

Enclosure IP rating: IP 20  
 Front frame IP rating: IP 66  
 Operating temperature: -15 ÷ 55 °C  
 Relative humidity (non condensing): 20 ÷ 80 %  
 Storage temperature: -20 ÷ 60 °C

### INPUT SIGNALS

1x DVI-D input port 29 pin, DVI-D, female, single link  
 2x VGA inputs ports 15 pin, High Density, D-SUB, female  
 4x PAL/NTSC composite video input ports BNC, female

### PHYSICAL DATA

Mounting type: Console/Flush, Desktop  
 Overall dimensions: 367(h) × 303(v) × 110(d) mm  
 Weight: 6,5 Kg

### POWER SUPPLY

Max consumption: 2A @ 24 Vdc  
 Power supply connector: PHOENIX COMBICON MSTB 2,5/3-G-5,8  
 Voltage range: 10 ÷ 35 Vdc (isolated)

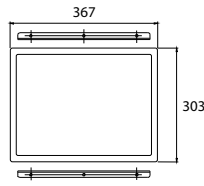
## VDS 317 D

17" MARINE MONITOR

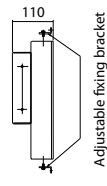


video display systems

## Wall Mounting

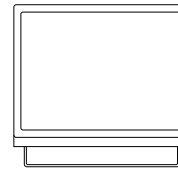


FRONT VIEW

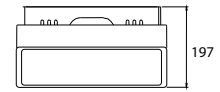


SIDE VIEW

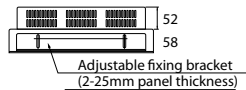
## Desk Top Mounting



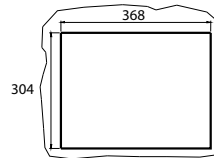
FRONT VIEW



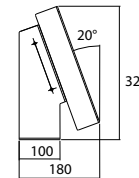
TOP VIEW



TOP VIEW



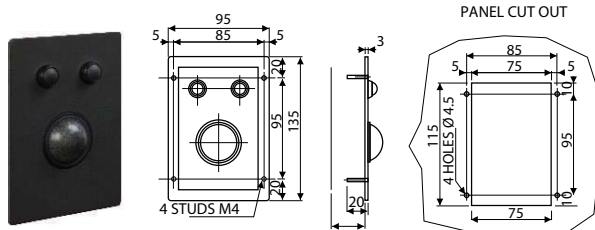
PANEL CUT OUT



SIDE VIEW

## Options and Accessories

## Trackball



## Specifications (basic version)

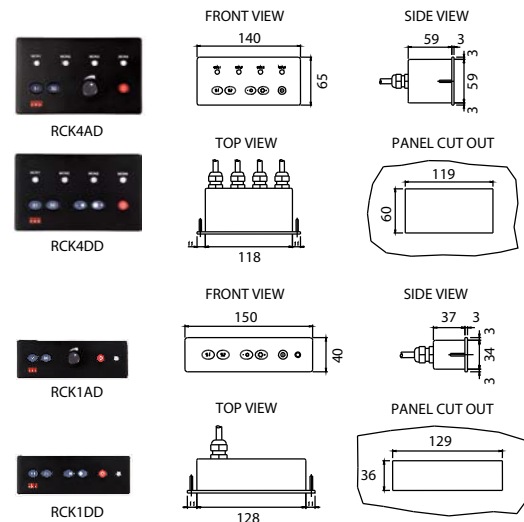
Sphere diameter:	38mm
Interfacing:	USB port
Connector:	USB type
Operating temperature:	-5°C+55°C
Storage temperature:	-20°C+60°C
Expected life:	>1 million sphere revolutions
Waterproofing degree:	IP60

## OPTIONS

Waterproofing degree:	IP67
-----------------------	------

VDS trackballs provide a convenient and robust pointing device for inside applications (IP60 compliant version) as well as outside applications (IP67 compliant version).

## Remote Keyboard Controllers



The remote keyboard controller provides controls for video source selection and display dimming (analogue or digital) for one or more panels simultaneously. It can be placed on the bridge wherever functionally most convenient.

## Ordering Codes

## VDS 317 D basic version

**M317D** VDS 317 D display 17", 24Vdc (isolated), 2xVGA, 1xDVI-D, 4xPAL/NTSC, Console and Desktop brackets.

## ACCESSORIES

**M0080** VESA standard bracket

## One among the following:

**M0063** RCK4DD: multiple display (1÷4) Remote Control Keyboard (digital dimming)

**M0064** RCK1AD: single display Remote Control Keyboard (analogue dimming)

**M0065** RCK4AD: multiple display (1÷4) Remote Control Keyboard (analogue dimming)

**M0066** RCK1DD: single display Remote Control Keyboard (digital dimming)

## One among the following:

**M0071** 38mm trackball (black color)

**M0072** 38mm IP67 trackball (light grey color)

## OPTIONS

**M0061** RS-232/RS-422/RS-485 port for PC interface

## One among the following:

**M0045** 1 PAL/NTSC input (IP67 connector)

**M0046** 2 PAL/NTSC inputs (IP67 connectors)

**M0047** 3 PAL/NTSC inputs (IP67 connectors)

**M0048** 4 PAL/NTSC inputs (IP67 connectors)