

VDS 317 P

17" MARINE MONITOR



video display systems



The VDS 317 P display provides a standard SXGA 17" LCD/TFT panel with a non-compromising mechanical design and excellent performance. A proven glass bonding process leads to drastically reduced light reflection and improved contrast, enabling perfect readability even in very low-light environments and keeping mechanical robustness at the top.

Enclosure has been designed to minimize the distance between adjacent panels, making VDS 317 P ideal for glass bridge installations. The display complies with EN 60945 and RINA Rules 2007 regulations.

HIGHLIGHTS

- ▼ GLASS BRIDGE SOLUTION
- ▼ COMFORTABLE IN EVERY LIGHT CONDITION
- ▼ WIDE OPERATING VOLTAGE RANGE
- ▼ FLEXIBLE MOUNTING OPTIONS
- ▼ MULTI-PANEL DIMMING SUPPORTED
- ▼ MULTIPLE VIDEO INPUTS
- ▼ RINA RULES 2007 COMPLIANT
- ▼ EN 60945 4TH COMPLIANT

Technical Specifications

APPROVALS/COMPLIANCE

Type approved: RINA Rules 2008 PtC,Ch3,Sec6 and EN60945 4th

DISPLAY

Active area: 338(h) × 270(v) mm
 Backlight lamps: 4 CCFL
 Bonded safety glass: Bonded, contrast enhancing, optically coated
 Colors: 16.7 M
 Contrast: 800:1 (typ)
 Dimming: Max ÷ 0
 Dot pitch: 0,264 mm
 Luminance: 300 cd/m² (typ)
 Minimum lamps life: 50000 hours
 Resolution: 1280 x 1024 pixels (SXGA)
 Response time: 25 ms
 Size: 17"
 Type: LCD TFT color
 Viewing angles: ± 80° / ± 80° (h/v)

ENVIRONMENT

Enclosure IP rating: IP 20
 Front frame IP rating: IP 66
 Operating temperature: -15 ÷ 55 °C
 Relative humidity (non condensing): 20 ÷ 80 %
 Storage temperature: -20 ÷ 60 °C

INPUT SIGNALS

1x DVI-D input port 29 pin, DVI-D, female, single link
 2x VGA inputs ports 15 pin, High Density, D-SUB, female
 4x PAL/NTSC composite video input ports BNC, female

PHYSICAL DATA

Mounting type: Console/Flush, Desktop
 Overall dimensions: 367(h) × 303(v) × 110(d) mm
 Weight: 6,5 Kg

POWER SUPPLY

Max consumption: 2A @ 24 Vdc
 Power supply connector: PHOENIX COMBICON MSTB 2,5/3-G-5,8
 Voltage range: 10 ÷ 35 Vdc (isolated)

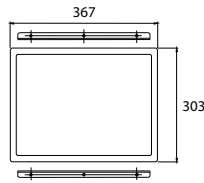
VDS 317 P

17" MARINE MONITOR

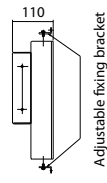


video display systems

Wall Mounting

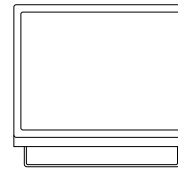


FRONT VIEW

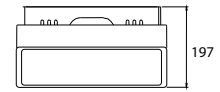


SIDE VIEW

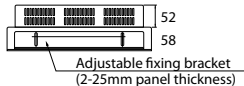
Desk Top Mounting



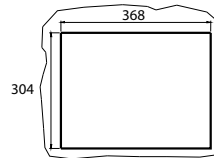
FRONT VIEW



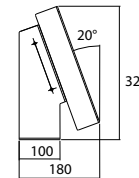
TOP VIEW



TOP VIEW



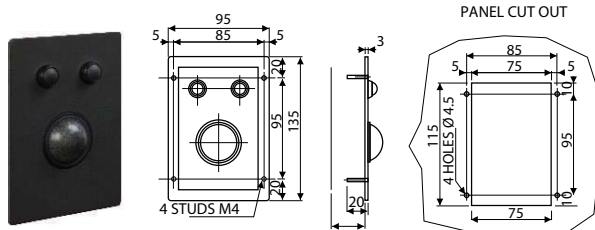
PANEL CUT OUT



SIDE VIEW

Options and Accessories

Trackball



Specifications (basic version)

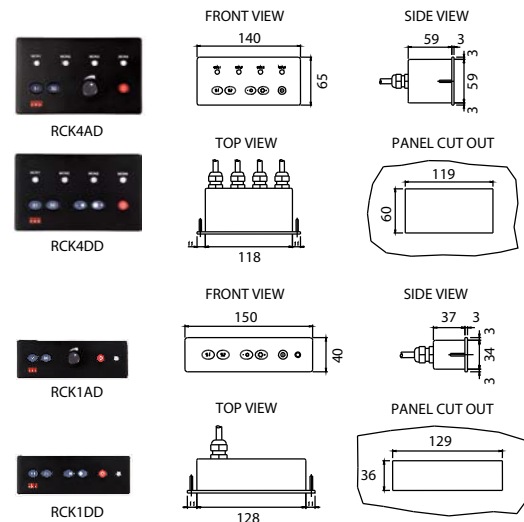
Sphere diameter:	38mm
Interfacing:	USB port
Connector:	USB type
Operating temperature:	-5°C+55°C
Storage temperature:	-20°C+60°C
Expected life:	>1 million sphere revolutions
Waterproofing degree:	IP60

OPTIONS

Waterproofing degree:	IP67
-----------------------	------

VDS trackballs provide a convenient and robust tracking device for inside applications (IP60 compliant version) as well as outside applications (IP67 compliant version).

Remote Keyboard Controllers



The remote keyboard controller provides controls for video source selection and display dimming (analog or digital) for one or more panels simultaneously. It can be placed on the bridge wherever functionally most convenient.

Ordering Codes

VDS 317 P basic version

M317P VDS 317 P display 17", 24Vdc (isolated), 2xVGA, 1xDVI-D, 4xPAL/NTSC, Console and Desktop brackets.

ACCESSORIES

M0080 VESA standard bracket

One among the following:

M0063 RCK4DD: multiple display (1÷4) Remote Control Keyboard (digital dimming)

M0064 RCK1AD: single display Remote Control Keyboard (analogue dimming)

M0065 RCK4AD: multiple display (1÷4) Remote Control Keyboard (analogue dimming)

M0066 RCK1DD: single display Remote Control Keyboard (digital dimming)

One among the following:

M0071 38mm trackball (black color)

M0072 38mm IP67 trackball (light grey color)

OPTIONS

M0061 RS-232/RS-422/RS-485 port for PC interface

M177S 17" resistive touch screen

One among the following:

M0045 1 PAL/NTSC input (IP67 connector)

M0046 2 PAL/NTSC inputs (IP67 connectors)

M0047 3 PAL/NTSC inputs (IP67 connectors)

M0048 4 PAL/NTSC inputs (IP67 connectors)