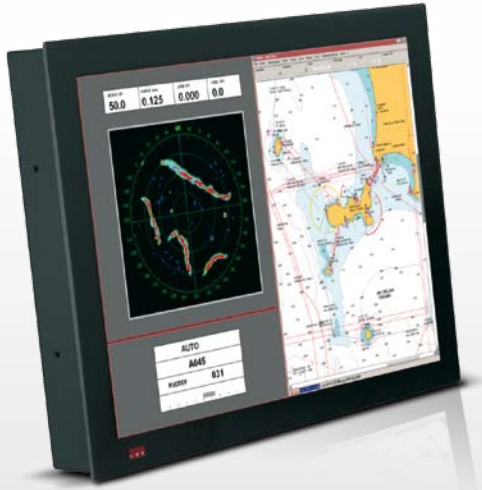


VDS 319 P

19" MARINE MONITOR



video display systems



The VDS 319 P display provides a standard SXGA 19" LCD/TFT panel with a non-compromising mechanical design and excellent performance. A proven glass bonding process leads to drastically reduced light reflection and improved contrast, enabling perfect readability even in very low-light environments and keeping mechanical robustness at the top.

Enclosure has been designed to minimize the distance between adjacent panels, making VDS 319 P ideal for glass bridge installations. The display complies with EN 60945 and RINA Rules 2007 regulations.

HIGHLIGHTS

- ▼ GLASS BRIDGE SOLUTION
- ▼ COMFORTABLE IN EVERY LIGHT CONDITION
- ▼ WIDE OPERATING VOLTAGE RANGE
- ▼ FLEXIBLE MOUNTING OPTIONS
- ▼ MULTI-PANEL DIMMING SUPPORTED
- ▼ MULTIPLE VIDEO INPUTS
- ▼ RINA RULES 2007 COMPLIANT
- ▼ EN 60945 4TH COMPLIANT

Technical Specifications

APPROVALS/COMPLIANCE

Governing Standard:	RINA Rules 2008 PtC, Ch3, Sec6 and EN60945 4th
---------------------	--

DISPLAY

Backlight lamps:	4 CCFL
Bonded safety glass:	Bonded, contrast enhancing, optically coated
Contrast:	1300:1 (typ)
Dimming:	Max ÷ 0
Dot pitch:	0,294 mm
Luminance:	300 cd/m ² (typ)
Minimum lamps life:	50000 hours
Resolution:	1280 x 1024 pixels (SXGA)
Response time:	20 ms
Size:	19"
Type:	LCD TFT color
Viewing angles:	± 89° / ± 89° (h/v)

ENVIRONMENT

Enclosure IP rating:	IP 20
Front frame IP rating:	IP 66
Operating temperature:	-15 ÷ 55 °C
Relative humidity (non condensing):	20 ÷ 80 %
Storage temperature:	-20 ÷ 60 °C

INPUT SIGNALS

1x DVI-D input port 29 pin, DVI-D, female, single link
2x VGA inputs ports 15 pin, High Density, D-SUB, female
4x PAL/NTSC composite video input ports BNC, female

PHYSICAL DATA

Mounting type:	Console/Flush, Desktop
Overall dimensions:	445(h) × 365(v) × 116(d) mm
Weight:	7,8 Kg

POWER SUPPLY

Max consumption:	3A @ 24 Vdc
Power supply connector:	PHOENIX COMBICON MSTB 2,5/3-G-5,8
Voltage range:	10 ÷ 35 Vdc (isolated)

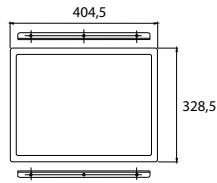
VDS 319 P

19" MARINE MONITOR

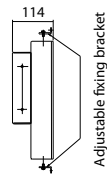


video display systems

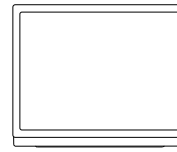
Wall Mounting



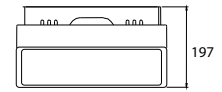
FRONT VIEW



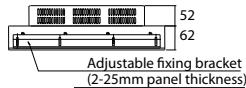
SIDE VIEW



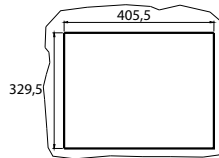
FRONT VIEW



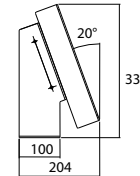
TOP VIEW

Adjustable fixing bracket
(2-25mm panel thickness)

TOP VIEW



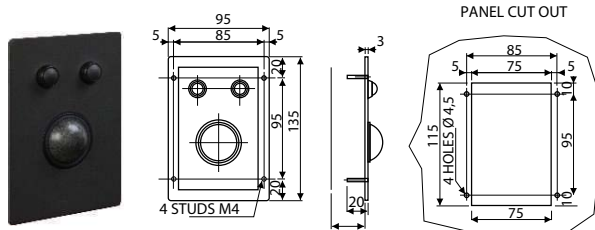
PANEL CUT OUT



SIDE VIEW

Options and Accessories

Trackball



Specifications (basic version)

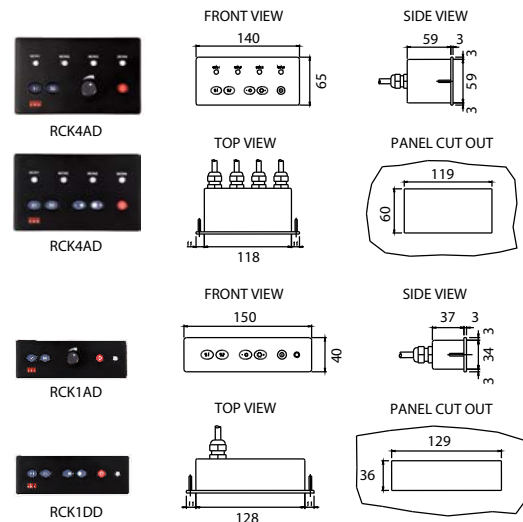
Sphere diameter:	38mm
Interfacing:	USB port
Connector:	USB type
Operating temperature:	-5°C+55°C
Storage temperature:	-20°C+60°C
Expected life:	>1 million sphere revolutions
Waterproofing degree:	IP60

OPTIONS

Waterproofing degree:	IP67
-----------------------	------

VDS trackballs provide a convenient and robust pointing device for inside applications (IP60 compliant version) as well as outside applications (IP67 compliant version).

Remote Keyboard Controllers



The remote keyboard controller provides controls for video source selection and display dimming (analog or digital) for one or more panels simultaneously. It can be placed on the bridge wherever functionally most convenient.

Ordering Codes

VDS 319 P basic version

M319P VDS 319 P display 19", 24Vdc (isolated), 2xVGA, 1xDVI-D, 4xPAL/NTSC, Console and Desktop brackets

Included with this version

M0066 RCK1DD: single display Remote Control Keyboard (digital dimming)

ACCESSORIES

One among the following:

- M0063** RCK4DD: multiple display (1÷4) Remote Control Keyboard (digital dimming)
- M0064** RCK1AD: single display Remote Control Keyboard (analogue dimming)
- M0065** RCK4AD: multiple display (1÷4) Remote Control Keyboard (analogue dimming)
- M0066** RCK1DD: single display Remote Control Keyboard (digital dimming)

One among the following:

- M0071** 38mm trackball (black color)
- M0072** 38mm IP67 trackball (light grey color)

OPTIONS

One among the following:

- M0045** 1 PAL/NTSC input (IP67 connector)
- M0046** 2 PAL/NTSC inputs (IP67 connectors)
- M0047** 3 PAL/NTSC inputs (IP67 connectors)
- M0048** 4 PAL/NTSC inputs (IP67 connectors)

One among the following:

- M0061** RS-232/RS-422/RS-485 port for PC interface
- M19TS** 19" resistive touch screen